

'FP' Flameproof Immersion Heaters

The EXHEAT 'FP' range of flameproof rod type immersion heaters are suitable for installation in process tanks, pressure vessels and similar plant certified for use in a Zone 1 or Class 1 Div 1 Hazardous Areas where the flammable atmosphere is a Group IIA, IIB, or IIC Gas. They are suitable for heating all types of process liquids and gasses which are non-corrosive to the materials in construction.

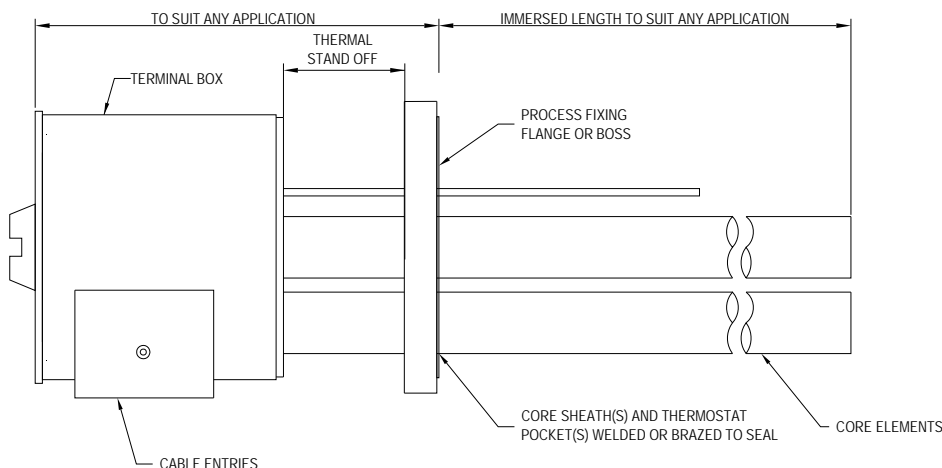
FEATURES

- Certified to meet the ATEX directive 94/9/EC
- Mild Steel or 316 Stainless Steel terminal enclosure with weatherproof protection to IP65.
- Choice of built in process temperature sensors.
- Suitable for ambient temperatures to -50 °C to +60 °C.
- Mounting of the heater can be by a threaded boss or an industry standard flange.
- Designed for horizontal installation only. Vertical mounting version available on request.
- Can be supplied with the terminal box mounted away from the fixing boss/flange for high process temperatures.

TYPICAL APPLICATIONS

- Pre-Heating Oil/Water
- Processing Equipment
- Cleaning & Rinsing Tanks
- Heating Medium
- Boiler Equipment
- Frost Protection
- Heat Transfer Systems
- Tank Heating





Terminal box type	Minimum Flange Size Without Stand off		kW LOAD with a maximum Immersed Length of 3665mm	
	Ins	mm	Max. Cable Entries	Max. No. of Elements Without Stand off
FP4	3	75	1 off M25 & 1 off M20	6
FP6	6	150	1 off M32 & 2 off M25	15
FP8	8	200	2 off M25 & 1 off M40	21
FP10	10	250	2 off M25 & 1 off M50	39
FP12	12	300	3 off M32 & 1 off M20	54

- Certification** ATEX Certified II 2 G/D ATEX or IECEx Certified Ex'd' IIC T1 to T6 Ex tD A21 IP66 T.... °C EN/IEC 60079-0, EN/IEC 60079-1, EN/IEC 61241-0 + EN/IEC 61241-1
- Enclosure** Mild Steel or 316 Stainless Steel, external and internal earths, screwed terminal cover, finished in epoxy paint (If required).
- Elements** A choice of rod type elements comprising of 80/20 Nickel Chrome resistance wire, compacted in high purity magnesium Oxide insulating powder and encased in either Copper, Mild Steel, Monel, Inconel, Incoloy, Stainless Steel and Titanium sheath, secured by either braising or welding depending upon the process application.
- Controls** Heater over-temperature protection is fitted as standard. Optional process temperature sensing devices can be incorporated in the form of thermostats, RTD's or thermocouples.
- Mounting** Any threaded boss or flange in any material can be specified within the limits of the design parameters. Heaters can be either 'direct-on' or 'stand-off'.
- Rating** To suit process requirement within the design parameters and ATEX approval.
- Voltage** Any electrical supply up to 690v.